



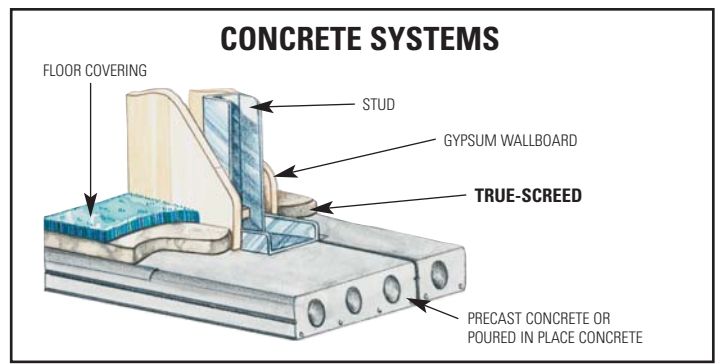
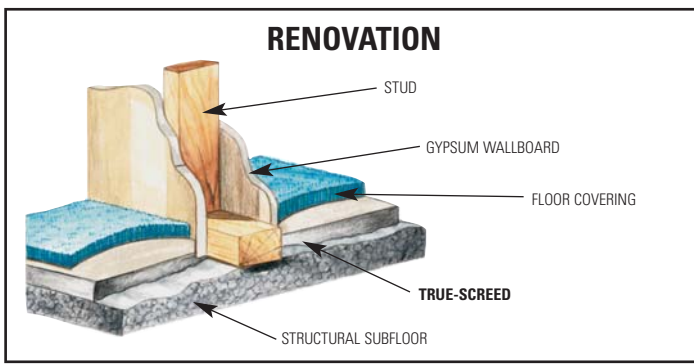
# **True-Screed**<sup>®</sup>

## **Cementitious Underlayment**

*TRUE-SCREED floor underlayment is a self-leveling cement concentrate, which transforms cracked, uneven concrete floors into a strong, smooth surface ideal for finished floor coverings.*

- **Perfect for new construction or renovation**
- **No troweling required; low in-place cost**
- **Fast setting time; quick drying**
- **Exceptional compressive strengths; high early strength**
  - **Portland Cement based; water resistant**
  - **Superior bonding characteristics**
  - **Installed only by Licensed Applicators of**

**Hacker Industries, Inc.**



## Recommended Specifications

### PART I GENERAL

- 1.1 Scope
  - A. Work Included:
    1. **TRUE-SCREED** Floor Underlayment
    2. **TRUE-SCREED** Floor Primer
    3. **TRUE-SCREED** Floor Sealer
- 1.2 Quality Assurance
  - A. **TRUE-SCREED** Floor Underlayment shall be installed by Licensed Applicators of Hacker Industries, Inc., using approved mixing and pumping equipment.
- 1.3 Delivery, Storage, and Handling
  - A. General Requirements: Materials shall be delivered in their original, unopened packages, and protected from exposure to the elements. Damaged or deteriorated materials shall be removed.
- 1.4 Site Conditions
  - A. Environmental Requirements: Before, during and after installation of **TRUE-SCREED**, building interior shall be enclosed and maintained at a temperature above 50°F (10°C) and below 90°F (32°C) until structure and subfloor temperature are stabilized.
- 1.5 Qualifications
  - A. Compressive strengths can be specified up to 6000 psi (41.4 MPa).
  - B. Tested in accordance to ASTM C109.

### PART II PRODUCTS

- 2.1 Materials
  - A. Self-Leveling Floor Underlayment: Floor underlayment compound shall be **TRUE-SCREED** Floor Underlayment as supplied by Hacker Industries, Inc., Newport Beach, CA.
  - B. Sand Aggregate: Sand shall meet the aggregate requirements of the **TRUE-SCREED** Sand Specification.
  - C. Mix Water: Potable, free from impurities.

- D. Subfloor Primer: **TRUE-SCREED** Floor Primer
  - E. Sealer: **TRUE-SCREED** Floor Sealer
- 2.2 Mix Designs
    - A. General Requirements: **TRUE-SCREED** mix proportions and methods shall be in strict accordance with product supplier recommendations.

### PART III EXECUTION

- 3.1 Preparation
  - A. Condition and Cleaning of Subfloor: Subfloor shall be structurally sound. General Contractor shall clean subfloor to remove mud, oil, grease, dirt, wax, and other contaminating factors which could act as a bond breaker before arrival of the **TRUE-SCREED** underlayment crew.
  - B. Leak Prevention: Fill cracks and voids with a quick setting patching or caulking material where leakage of **TRUE-SCREED** could occur.
  - C. Subfloor Preparation: Preparation of subfloor shall be in strict accordance with product supplier recommendations.
  - D. Expansion Joints: Allow joints to continue through the **TRUE-SCREED** at the same width.
- 3.2 Application of Self-Leveling Flooring
  - A. Scheduling: Application of **TRUE-SCREED** shall not begin until the building is enclosed, including roof, windows, doors, and other fenestration.
  - B. Application: Application of **TRUE-SCREED** shall be in strict accordance with product supplier recommendations.
  - C. Drying: General Contractor shall provide correct temperature in building until **TRUE-SCREED** is cured.

- 3.3 Preparation for Installation of Glue Down Floor Goods
  - A. Sealing: Seal all areas that receive glue down floor goods with **TRUE-SCREED** Sealer according to the Hacker Industries, Inc.'s specifications. Any floor areas where the surface has been damaged shall be cleaned and sealed regardless of floor covering to be used. Where floor goods manufacturers require special adhesive or installation systems, their requirements supercede these recommendations.
  - B. Floor Covering Procedures: Please see Hacker Industries, Inc.'s "Guidelines for Installing Finished Floor Coverings." The guideline is not a warranty and shall be used as a guideline only.
- 3.4 Field Quality Control
  - A. Slump Test: **TRUE-SCREED** mix shall be tested for slump as it is being pumped using a 2" by 4" (51mm by 102mm) cylinder.
  - B. Field Samples: At least one set of 3 molded cube samples shall be taken from each day's pour during the **TRUE-SCREED** application. Cubes shall be tested as recommended by Hacker Industries, Inc. in accordance with modified ASTM C 109. Test results shall be available to architect and/or contractor upon request from applicator.
- 3.5 Protection
  - A. Protection From Heavy Loads: During construction, place temporary wood planking over **TRUE-SCREED** wherever it will be subject to heavy wheeled or concentrated loads.



Hacker Industries, Inc.  
 610 Newport Center Drive, Suite 250  
 Newport Beach, CA 92660 USA  
 (800) 642-3455 FAX: (800) 906-8548  
 e-mail: info@HackerIndustries.com  
 www.HackerIndustries.com

© 2/2004 Hacker Industries, Inc.  
 TRUE-SCREED and the associated logos are the registered trademarks of Hacker Industries, Inc., Newport Beach, CA.

For the Licensed Applicator in your area, please call our toll-free number (800) 642-3455.